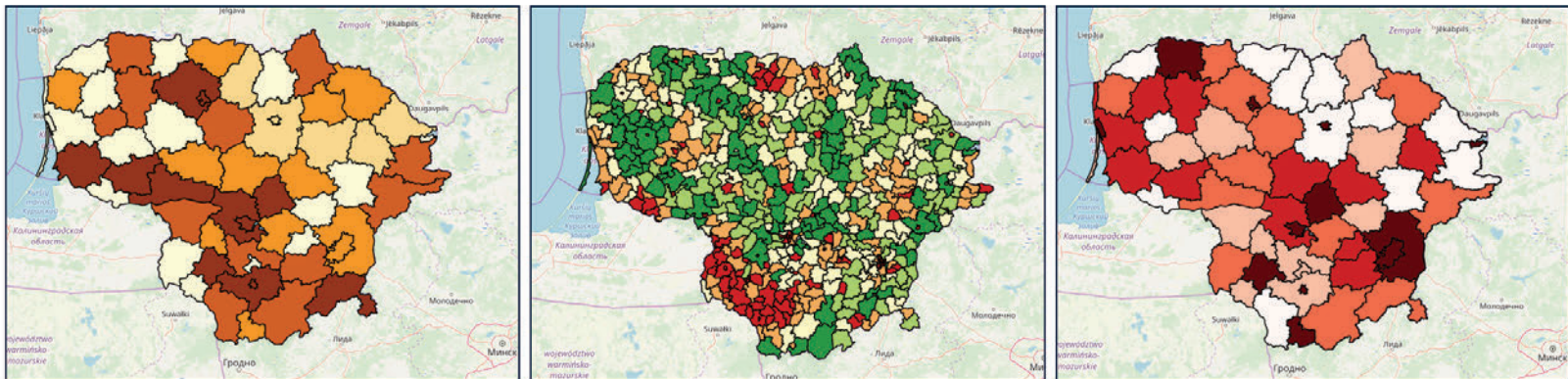


International Conference
July 1, 2020 – July 3, 2020
Vilnius, Lithuania

MAPPING AND ASSESSMENT OF ECOSYSTEM SERVICES:

CHALLENGES IN A GLOBAL ENVIRONMENTAL CONTEXT



First Circular



Kuriame
Lietuvos ateitį
2014–2020 metų
Europos Sąjungos
fondų investicijų
veiksmų programa



INVITATION & BACKGROUND

1.

On behalf of the Organizing Committee, we are pleased to invite to take part in the international conference “**Mapping and assessment of ecosystem services: Challenges in a global environmental context**” which will take place in Vilnius, Lithuania.

Mapping and assessment of ecosystem services (ES) is crucial to understand the capacity of ecosystems to provide ES in quantity and quality. The European Union (EU) Biodiversity Strategy aims to reduce the loss of ES and the services provided by the ecosystems until 2020. EU vision goes much beyond 2020 and by 2050 it is aimed that the “biodiversity and the ecosystem services it provides — its natural capital — are protected, valued and appropriately restored for biodiversity's intrinsic value and for their essential contribution to human wellbeing and economic prosperity, and so that catastrophic changes caused by the loss of biodiversity are avoided” . There is still a long road to achieve this aim and is fundamental to protect and value the ecosystems and their services, especially in a rapid and unpredictable global environmental change context.

Under the target 2 of the biodiversity strategy, EU aims to maintain and restore ecosystems (at least 15 % by 2020). Target 2 is divided in 3 actions (5, 6, and 7). Action 5 EU Member States are required to map and assess the condition and the economic value of the ecosystem and their services and report this to EU . Many efforts have been taken to map and assess the ecosystem and their services under the MAES initiative and the H2020 project Esmeralda . Nevertheless, much work remains to be done at national level to accomplish EU targets. This has a special importance when the rate of ecosystems degradation caused by human activity (e.g urban sprawl, agriculture intensification, land abandonment and climate change) is extremely high and never experienced.

THE OBJECTIVES OF THIS CONFERENCE

- Review and share the best practices and novel methods for mapping and assessment of ecosystem and their services in a global environmental change;
- Identify the main challenges and problems in mapping and assessment of the ecosystem and their services at the different scales and environments;
- Stakeholder engagement and participation in ES mapping and assessment;
- Model and assess the impacts of the drivers of change on ecosystems.

The abstracts of a maximum 300 words are welcome. In the abstract please include your name, affiliation and contact. We encourage especially **early-stage career** scientist to apply. Participation in the conference is **free**.

Venue: Mykolas Romeris University Laboratories, Didlaukio g. 55, Vilnius, Lithuania.

Language: English

Organization: Mykolas Romeris University, Environmental Management Laboratory

WEDNESDAY, JULY 01, 2020 (KEY LECTURES)

Key lecture 1: Socio-environmental modeling to integrate ecosystem services in river basins management. Dr. Vicenç Acuña (ICRA, Catalonia).

Key lecture 2: Mapping and assessment of ecosystem services: Challenges in a global environmental context. Miguel Villoslada (Estonian University of Life Sciences, Estonia).

Key lecture 3: Mapping green and blue infrastructure in urban environments. Prof. Dr. Juan Francisco Martinez-Murillo (University of Malaga, Spain).

THURSDAY, JULY 02, 2020 (KEY LECTURES)

Key lecture 1: Stakeholder analyses in ecosystem services assessment. Prof. dr. Berta Martín-López (Leuphana University of Lüneburg, Germany).

Key lecture 2: Governance of ecosystem services through interventions by governments, companies and NGOs. Prof. dr. Hens Runhaar (Utrecht University, The Netherlands).

Key lecture 3: Ecosystem services assessment in practice - VivaGrass project in Latvia. Kristina Veidemane (Baltic Environmental Forum, Latvia).

FRIDAY, JULY 03, 2020

Field trip to Dzūkija National Park (Figure 1).



Fig. 1. Dzūkija National Park

THE ORGANIZING COMMITTEE

- **Paulo Pereira** (Environmental Management Laboratory, Mykolas Romeris University)
- **Miguel Inácio** (Environmental Management Laboratory, Mykolas Romeris University)
- **Marius Kalinauskas** (Environmental Management Laboratory, Mykolas Romeris University)
- **Katažyna Mikša** (Human Rights Laboratory, Mykolas Romeris University)
- **Ieva Misiūnė** (Environmental Management Laboratory, Mykolas Romeris University)

CONTACTS

Address: Mykolas Romeris University, Environmental Management Laboratory, Didlaukio g. 55
LT-08303 Vilnius, Lithuania

Email.: kbogdzevic@mruni.eu

CITY INFORMATION

3.

Lithuania is a green and flat land in the north of Europe, ashore the Baltic Sea. From the geographic point of view, Lithuania is a state of Central Europe and it is one of three Baltic countries, and shares borders with Latvia, Belarus, Poland and Russia (Kaliningrad). The country is full of preserved natural landscapes, woods, lakes and rivers, and has an unique sea side, with Curonian spit, a sandy peninsula, isolating the Curonian sea from the Baltic sea.

Vilnius is the capital of Lithuania, with a population of about half a million people. It is called a city of 100 churches and its Old Town, one of the largest and most gorgeous in Europe, has been inscribed in the World Heritage List of UNESCO since 1994.

The historical center of Vilnius, the Old Town, is one of the largest old town centers in Eastern Europe (covering almost 360 hectares) and contains the most valuable historical and cultural heritage of the city.

The Old Town buildings (approx. 1500 buildings) date back to different centuries. Although Vilnius is often referred to as the city of Baroque, almost all styles of the European architecture can be found in Vilnius, from Gothic to Renaissance, Classicism, and Jugendstil.

Vilnius have an extremely rich and healthy cultural life with many concerts and cozy places. For additional information please see the guide "[Vilnius in your pocket](#)" and the [Vilnius city tourist guide](#), available in several European languages. To consult other important meetings in Vilnius, please see [Vilnius Convention Bureau](#).

For more information about Lithuania and Vilnius [click here](#).

ACCOMMODATION

The price for accommodation in Vilnius is between 30 and 150 €. More information can be found in:

- www.vilniushotels.lt
- lt.hotels.com
- www.booking.com



IMPORTANT DATES & DEADLINES:

- Abstract submission will be closed on: **September 31, 2019.**
- Notification of application and abstract acceptance: **November 30, 2019.**
- Second Circular: **January 31, 2020.**
- Third Circular: **May 31, 2020.**

The conference is being organized within the project "LINESAM" „Lithuanian National Ecosystem Services Assessment and Mapping (LINESAM)" No. 09.3.3-LMT-K-712-01-0104 which is funded by the European Social Fund according to the activity "Improvement of researchers' qualification by implementing world-class R&D projects" of Measure No. 09.3.3-LMT-K-712.

LINESAM.MRUNI.EU

Mapping and assessment of ecosystem services:
Challenges in a global environmental context. First circular.

Text: Katažyna Mikša

Design & layout: Marius Kalinauskas

Mykolas Romeris University
Environmental Management Laboratory
Vilnius, 2019



LINESAM
Lithuanian National Ecosystem
Services Assessment and Mapping